



## Review

# Seaweed-Based Interventions for Diabetic Complications: An Analytical Discourse

Gour Gopal Satpati<sup>1\*</sup> , Navonil Mal<sup>2</sup> , Ruma Pal<sup>2</sup> 

<sup>1</sup>Department of Botany, Bangabasi Evening College, University of Calcutta, 19, Rajkumar Chakraborty Sarani, Kolkata- 700009, West Bengal, India

<sup>2</sup>Department of Botany, University of Calcutta, 35, Ballygunge Circular Road, Kolkata- 700019, West Bengal, India  
E-mail: [gour\\_satpati@yahoo.co.in](mailto:gour_satpati@yahoo.co.in)

**Received:** 2 April 2021; **Revised:** 22 May 2021; **Accepted:** 25 May 2021

**Abstract:** Modern sedentary lifestyle has given rise to a number of health issues; diabetes mellitus is one of them, another worldwide emergency, which is usually attributed either by deficiency or by insensitivity of insulin hormone; the master-regulator of blood glucose level. Seaweeds are rich reservoirs of a plethora of bioactive compounds with a great assortment of therapeutic potential. The goal of this communication is to represent the state-of-the-art about what is known for the anti-hyperglycemic properties recognized in seaweeds, emphasizing about their assets of several bioactive principles, their modes of action over targets of pharmacological interest, in addition to their precise extraction procedures. Various bioactive molecules from seaweed origin, mainly polyphenols, can inhibit several drug targets like  $\alpha$ -glucosidase,  $\alpha$ -amylase, aldose reductase, protein tyrosine phosphatase 1B, angiotensin-converting enzymes and dipeptidyl peptidase-4 to achieve good glycemic control.

**Keywords:** seaweed, diabetes, bioactive compound, hormone

## 1. Introduction

Seaweeds, mostly constituted by brown and red macroalgal assemblages, are a great reservoir of a number of natural anti-diabetic agents due to the presence of plentiful amount of polyphenols, vitamins, carotenoids, unsaturated fatty acids, pigments including phycoerythrin, phycobilins and many more with barely any side effects. The propensity of their cell wall to retain excellent quantities of trace elements, as well as other marine minerals makes them legendary as dietary food supplements with immense biomedical interest [1]. In many regions of East Asia, mostly in the coastal countries, seaweeds are taken as a wholesome meal in their delicacy [2]. For example, Japanese used to consume 5.3 g of seaweed per day in their daily diet [3]. Inactive lifestyle, unhealthy dietary choices associated with rapid urbanization has increased the risk of diabetic complications worldwide, verging on epidemic proportions over both the developed and developing nations. Rigorous studies have established seaweeds as skilful defenders against a range of pernicious health issues including hyperlipidemia [4], hyperglycemia [5], breast cancer [6] and other cardiovascular hassles [7].

Tanemura et al. have reported that consumption of the sporophylls of *Undaria pinnatifida* (Wakame) reduces post-prandial blood glucose level, probably by virtue of their plentiful fucoxanthin content [8]. Paradis et al. demonstrated the role of commercial macro algal blend containing *Fucus vesiculosus* and *Ascophyllum nodosum* in insulin sensitivity

and regulation in humans, as measured using Cederholm index after sugar consumption [9]. A study involving Korean population, suggested the relevance of *Undaria pinnatifida* and *Porphyra yezoensis* as anti-diabetic diet [10]. Sanger et al. have elucidated the role of one edible marine seaweed *Halymenia durvillae* in diabetes management [11]. Aqueous extract of *H. durvillae* appeared to show excellent efficiency to inhibit  $\alpha$ -glucosidase enzyme, one of the major drug targets for diabetes management, with IC<sub>50</sub> value 4.34±0.32 mg/mL. Yan et al. have used the aqueous ethanolic extract of *Enteromorpha prolifera* over streptozotocin-induced type 2 diabetic mice, fed with high-sucrose/high-fat diet [12]. The flavonoid-rich fraction, containing the active principle, EPW3 (<3 kDa), characterized through high-resolution UPLC-Q-TOF-MS/MS system has been reported to diminish the blood glucose level at fasting, enhance oral glucose toleration and reduce liver and kidney injury. They attributed the in behind molecular mechanism through q-PCR analysis and according to the result, EPW3 appeared to boost up the glucose consumption and insulin sensitivity through restraining JNK and by invigorating PI3K/Akt signalling cascades. The diabetes-mitigating properties of six different seaweeds; *Ulva lactuca* (Chlorophyta), *Padina pavonica*, *Sargassum acinarium*, *S. muticum* and *Turbinaria decurrens* (Phaeophyta) and *Pterocladia capillacea* (Rhodophyta) have been checked by Ismail et al. [13]. The maximum anti-hyperglycemic activity has been exerted from the acetone extract of *T. decurrens* with an IC<sub>50</sub> value of 4.37 mg/mL (96.1% inhibition potency) in comparison with Acarbose, used as positive control, which inhibits the starch-degrading  $\alpha$ -amylase enzyme. Likewise, it has been shown to inhibit the  $\alpha$ -glucosidase enzyme at a concentration of 90 mg/mL, with IC<sub>50</sub> value of 2.84 mg/mL (97.4% inhibition potency). Hardoko et al. measured the  $\alpha$ -glucosidase inhibition potency of the laminaran fraction from *Sargassum duplicatum* with IC<sub>50</sub> value of 36.13 ppm, characterization has been done using fourier transform infra-red spectroscopy (FTIR) analysis and  $\lambda$ -max absorption spectroscopy [14]. Mohapatra et al. have emphasized the anti-hyperglycemic effect of ethyl-acetate extract of *Ulva fasciata* through inhibition of  $\alpha$ -amylase [15]. Radhika and Priya have emphasized the effect of *Acanthophora spicifera* over alloxan induced diabetes [16]. Recently, another group from Vietnam has studied the role of *Laurencia dendroidea* using 80% methanol for extraction and fractionated with n-hexane, chloroform, ethyl acetate and butanol. The ethyl acetate fraction was with strongest  $\alpha$ -glucosidase inhibitory property, probably due to the enormity in polyphenol content in this fraction [17]. The possible mechanism relies on the hindrance of the active sites of the diabetic enzymes by the polyphenolic substances, thereby altering their catalytic efficiency [18].

## 2. Pathophysiology of diabetes mellitus - The worldwide emergency

Diabetes mellitus (DM), a type of chronic hyperglycemia, is one of the most leading health hazards of this century, characterised by deficiency and resistance of insulin hormone imparting extremity in the blood glucose level. Some other complications associated with DM are hypertension, neuropathy, nephropathy, several vascular disorders and many more [19]. Normally, pancreatic  $\beta$ -cells secrete insulin, which maintains the blood glucose level at its optimum level and promotes body cells to feed glucose for energy production. Loss of insulin sensitivity along with diminution of insulin production leads to blood glucose accumulation at an alarming level, resulting in the outcome of diabetic complications [20]. Based on the etiological point of view, DM is of two types- (i) Type 1 DM, attributed due to auto-immune demolition of the pancreatic  $\beta$ -cells resulting from insulin deprivation, and (ii) Type 2 DM, much more prevalent than the former one [21], accounts for the insulin-insensitivity as well as insulin-resistance of body cells due to excessive glucose production by liver cells, accompanied by poor glucose-consumption by muscle and adipose cells [22]. Current clinical approach mainly focuses on the manipulation of several starch-hydrolysing enzymes (for example, pancreatic  $\alpha$ -amylase) as well as glucose-consumers like intestinal  $\alpha$ -glucosidase to combat this multifactorial disorder [23].

## 3. Bioactive principles from seaweeds with anti-diabetic potency

Seaweeds are mostly marine macroalgae, majorly categorised into three distinct groups based on their pigment composition- green algae (Chlorophyta), red algae (Rhodophyta) and brown algae (Phaeophyta) [24]. They are a great asset of a number of active principles like polyphenols, poly- and monounsaturated fatty acids, carotenoids, dietary

fibres among others with immense health benefits, having anti-hyperglycemic, antioxidant, cytotoxic as well as anti-inflammatory properties [25]. Some of which are discussed in the following section.

### 3.1 Monounsaturated fatty acids (MUFA)

Although the exact mechanism for MUFA-mediated diabetes management is not clear cut, it has been attributed to up-regulate several glucose transporter proteins (for example GLUT1, GLUT4) thereby promoting intracellular glucose uptake besides restricting destruction of pancreatic- $\beta$  cells [26]. Sabin et al. have reported enhanced insulin sensitivity due to MUFA-mediated interference over IRS/PI3K insulin pathway in association with elevated GLUT4 translocation across the cell membrane [27]. Dietary MUFAs also play a significant role in diabetes prevention through the amelioration of glucagon-like peptide (GLP-1) [28] and adiponectin levels [29].

### 3.2 Polyunsaturated fatty acids (PUFA)

As about 2% of the dry weight of seaweed constitutes different kinds of PUFAs, most of which are omega-3 (Figure 1) and omega-6 fatty acids, important components for healthy human diet [30]. But the members of Chlorophyta (except: *Ulva* sp.) have lesser lipid content in comparison with other phaeophyceae and rhodophyceae members [31]. The possible mechanism relies upon the improvement of insulin sensitivity and rate of glucose consumption [32]. Omega-3 PUFA can also check insulin insensitivity by inhibiting toll-like receptors (TLR) like TLR-2 and TLR-4 [33]. Other long chain PUFAs alleviates the concentration of tumour necrosis factor- $\alpha$  and pro-inflammatory interleukin-1ra, whereby elevating the concentration of different anti-inflammatory cytokines like interleukin-10 [34]. Moreover, Jump et al. discussed the genetic interplay behind the PUFA-mediated hyperglycemic mitigation [35]. They have highlighted the role of a number of transcription factors like sterol-regulatory element-binding protein-1c, hepatic nuclear factors and liver X receptor etc. which are integral part of fat and sugar metabolism.

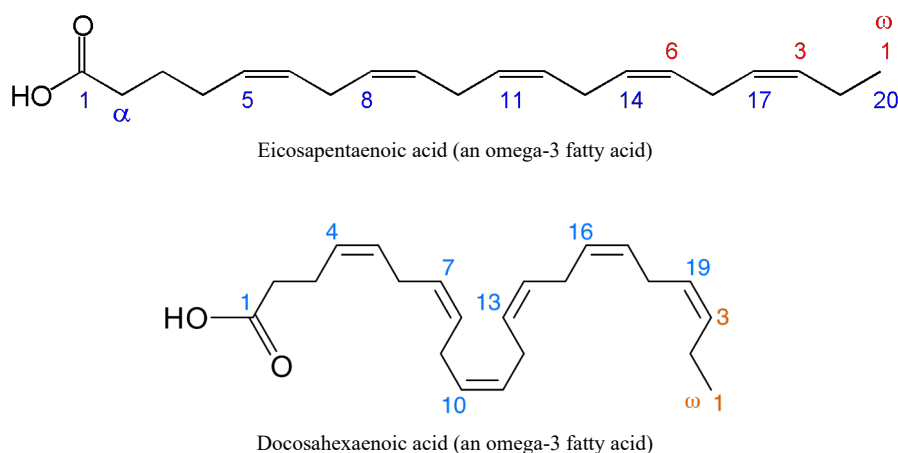


Figure 1. Different seaweed-derived PUFAs of biomedical interest

### 3.3 Dietary fibres

Including dietary fibres in daily diet not only reduces body weight, glycemic level and inflammation, but also enhance satiety as well as hormonal interactions [36]. Several seaweed-based food items like arroz-caldo (porridge) incorporated with lambda-carrageenan (Figure 2) [37], Nori (*Porphyra*) has been proved to have anti-hyperglycemic potential [38]. Vaugelade et al. have studied the effects of dietary-fibre extracts from *Palmaria palmata*, *Laminaria digitata* and *Euclima cottonii*, over insulin sensitivity and intestinal glucose absorption in pigs [39].

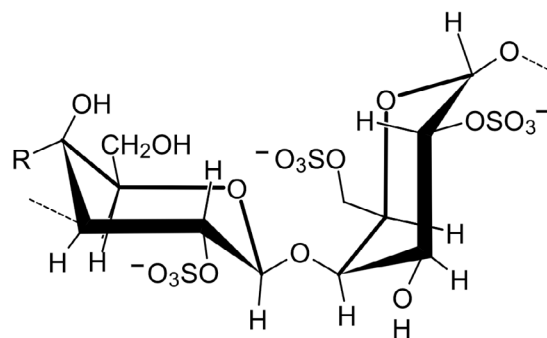


Figure 2. Structure of lambda carrageenan

### 3.4 Polyphenols

Polyphenols from seaweeds are mainly constituted by phlorotannins, derived from phloroglucinol subunits. The phenol groups, present in their molecular architecture, are responsible for mitigation of diabetes related oxidative stress. Some important seaweed-derived polyphenols, with immense therapeutic interest are eckols, fucophlorethols, fucols and carmalols (Figure 3) [25].

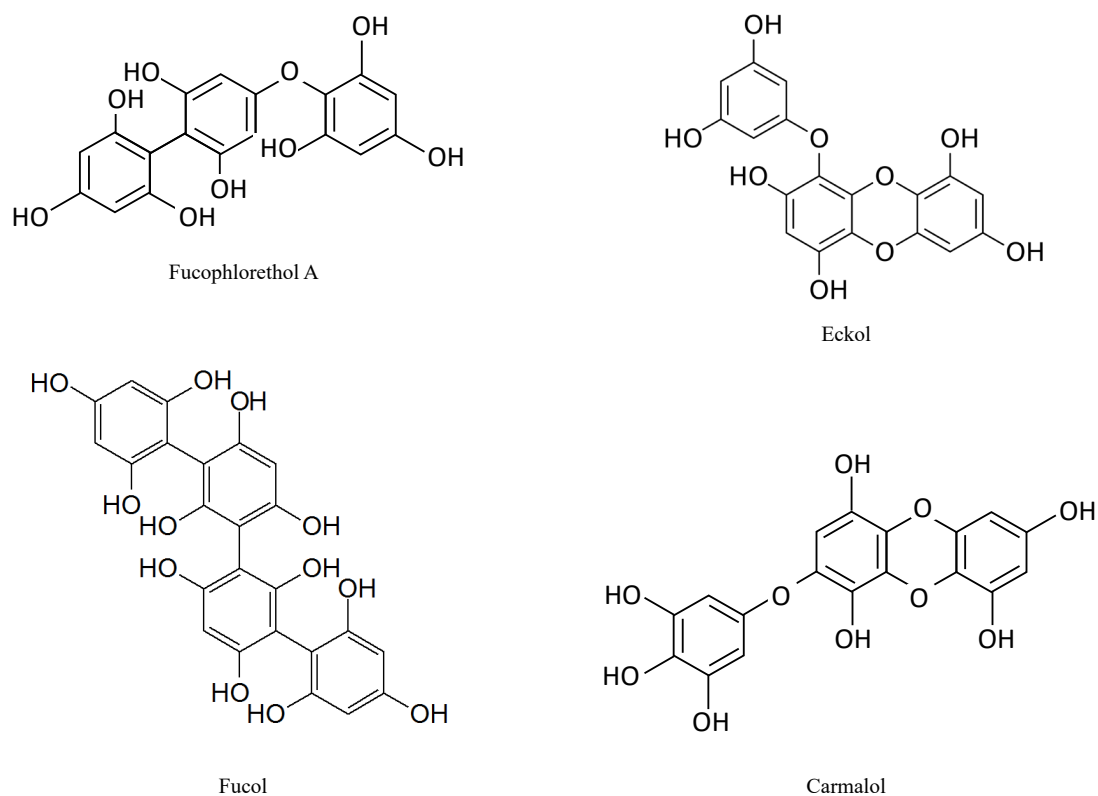


Figure 3. Different phlorotannins of seaweed-origin

### 3.5 Carotenoids

Brown seaweeds involve a great array of pigments and the authoritative one is fucoxanthin (Figure 4). It has tremendous anticarcinogenic, antihyperglycemic, antioxidative potential due to the presence of oxygenic functional group and novel allenic bond in their structural organization.

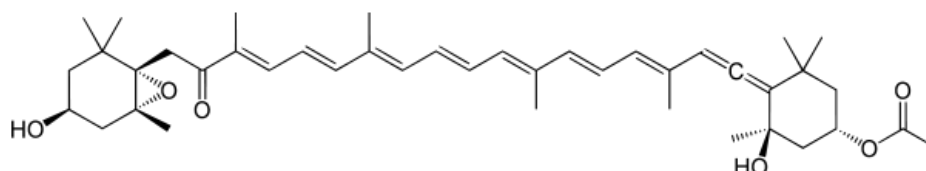


Figure 4. Molecular structure of fucoxanthin

## 4. Novel trends for bioactive compounds extraction from seaweeds

Recent technological approaches mainly lean on four different techniques for extraction of therapeutically relevant compounds from seaweeds, which are- Supercritical Fluid Extraction (SFE), Ultrasound-Assisted Extraction (UAE), Subcritical Water Extraction (SWE) and Microwave-Assisted Extraction (MAE) [25].

### 4.1 Ultrasound-assisted extraction (UAE)

UAE can be done under low temperatures, desired for extraction of thermolabile active principles and the working time is comparatively less [40], which makes it affordable than the other sophisticated trends [41]. This technique deals with the application of ultrasonic damage of biological matrix, triggering the release of active principles. The frequency usually ranges between 20 kHz to 100 kHz. Application of this substantial frequency leads to cavitation and implosive burst of cells. In this approach, the goal is mainly achieved by two ways- either by using ultrasonic probe (direct sonication) operating at a frequency of 20 kHz or by using ultrasonic bath at frequency of 40-50 kHz (indirect sonication). The difference is that during the indirect method, the sample is plunged with ultrasonic bath, whereas the direct method deals with the direct injection of the ultrasonic probe within the sample [42]. This technique is efficiently utilised for antioxidants and pigment extraction under the regime of proper solvents with appropriate solid to solvent ratio.

Dang et al. standardised the protocol for ultrasonic release of antioxidants from the alga *Hormosira banksii* [43]. The highest yield has been obtained at a temperature of 30°C for one hour under 150W power. Similarly, the highest yield has been obtained from the red seaweed *Laurencia obtusa* after treatment at 50°C temperature for 45 minutes with 250 W power and with a solvent to seaweed ratio of 30:1 mL/g [44]. However, Mittal et al. have shown that amalgamation of maceration with ultrasonication results in enhanced phycobiliproteins extraction from another red seaweed *Gelidium pusillum*, probably due to better cell lysis [45].

### 4.2 Microwave-assisted extraction (MAE)

In this trend, the energy of microwave gets absorbed by the polar molecules present over the cell surface, triggering cellular disruption, mainly due to dipole rotation and ionic conduction. Disrupted cells fasten the mass transfer reciprocated with solvent diffusion [46]. MAE extraction procedure can be operated either in open or in closed system. The former one is safer and economically viable as it relies on the application of atmospheric pressure and here large sample sizes can be processed at less time and is also worthy for thermolabile components [47]. This technique is mainly employed for polyphenol and polysaccharide extraction under optimized parameters like degree of biomass processing, solid-to-solvent ratio, temperature and frequency of microwave etc. [48].

### 4.3 Subcritical water extraction (SWE)

This method deals with a very short exposure (5-10 minutes) of samples under temperature (50-200°C) and pressure extremes (50-300 psi) for extraction, so the mobile phase (liquid) is maintained at its critical range, below its boiling point [41]. Here, water is used for extraction, instead of other costly organic solvents, therefore is usually attributed for extraction of non-polar compounds. del Pilar Sanchez-Camargo et al. have reported that enzymatic pre-treatment of samples can enhance the yield of several polyphenols of therapeutic interests [49]. But, this is not preferable for the extraction of thermolabile compounds as it is operated under high temperatures. Plaza et al. prepared a comparative data set with six different macroalgae [50]. They pointed out the fractions obtained at higher temperatures impart better antioxidant property probably due to Maillard and Caramelization reactions.

### 4.4 Supercritical fluid extraction (SFE)

Here, the reactions are operated above the critical range in terms of temperature, pressure and other characteristics of both liquids and gases [41]. Supercritical CO<sub>2</sub> (SC-CO<sub>2</sub>) is used as a solvent and better yield is achieved through increased mass transfer due to low viscosity and higher diffusion coefficient of supercritical CO<sub>2</sub>. The extra-added advantage is the less critical temperature and pressure of CO<sub>2</sub>, which prevents the degradation of extracted principles [51]. This technique is usually employed for the extraction of fatty acids, tocopherols, phytosterols, carotenoids, triglycerides and phenolic compounds [49].

The advantages and limitations of these extraction methodologies are summarized in Table 1.

**Table 1.** The advantages and limitations of extraction techniques

Extraction techniques	Advantages	Limitations	References
Ultrasound-Assisted Extraction (UAE)	<ul style="list-style-type: none"> <li>• Suitable for extraction of thermolabile compounds as it is operated under low temperature.</li> <li>• Solvent requirement and working time are lesser.</li> <li>• The surface area of contact between the solvent and extractable compound increases for better penetration of solvents into the sample matrix to release bioactive compounds.</li> </ul>	<ul style="list-style-type: none"> <li>• Acoustic cavitation may promote free radical synthesis, which in turn triggers lipid oxidation.</li> <li>• Large scale extraction is quite difficult.</li> <li>• Huge power demand.</li> </ul>	[52]
Microwave-Assisted Extraction (MAE)	<ul style="list-style-type: none"> <li>• Shorter extraction time and a higher extraction yield of the target analytes.</li> <li>• Simultaneous analyze of several samples at a time.</li> <li>• Close- or open-vessel system can be used for extraction.</li> </ul>	<ul style="list-style-type: none"> <li>• Methanol, ethanol and ethyl acetate absorb the microwave energy and convert it into heat, which helps to break cell wall for easy penetration of analytes into the solvent matrix.</li> <li>• Operating costs are high with high impurities obtained in the extract.</li> <li>• Ready-to-use extract.</li> </ul>	[53]
Subcritical Water Extraction (SWE)	<ul style="list-style-type: none"> <li>• Water can be used for extraction instead of organic solvents in an environment-friendly way.</li> <li>• Permeability of solvent into the material is enhanced results in higher extraction yield.</li> </ul>	<ul style="list-style-type: none"> <li>• Extraction temperature facilitates the yield of polyphenols and antioxidant activity.</li> <li>• High temperature promotes the degradation of thermolabile compounds.</li> </ul>	[25]
Supercritical Fluid Extraction (SFE)	<ul style="list-style-type: none"> <li>• As CO<sub>2</sub> is cheap and easily available at high purity, it also lacks toxicity and flammability.</li> <li>• The rapid penetration through the pores of heterogeneous matrices due to higher diffusion coefficient and lower viscosity.</li> <li>• For the preservation of bioactive compounds and preventing degradation, CO<sub>2</sub> has low critical temperature and pressure.</li> </ul>	As supercritical CO <sub>2</sub> (SC-CO <sub>2</sub> ) only extracts compounds of low polarity and non-polar compounds, it is better to use the combination of SC-CO <sub>2</sub> and a low amount of co-polar solvents like ethanol and methanol for getting better results.	[25]

## 5. Pharmacological targets to achieve good glycemic control

Some important drug targets for controlling post-prandial hyperglycemia are in the following section.

### 5.1 Sugar-hydrolysing enzymes

The synergistic activity of a number of glycoside hydrolases like  $\alpha$ -amylase,  $\alpha$ -glucosidase helps in digestion of starch within human body. Enzyme  $\alpha$ -amylase hydrolyses the  $\alpha$ -bonds of the dietary starch granules, whereas  $\alpha$ -glucosidase catalyses the final step for glucose synthesis from dietary starch and other disaccharides. Thus, restriction of these enzyme activities alleviates the post-prandial blood sugar level and can be employed as an efficient anti-hyperglycemic drug target [54].

Lee and Jeon emphasized the potential of family Lessoniaceae and the genus *Ecklonia* sp. as these groups are a great natural reservoir of a wide variety of polyphenols including phlorofucofuroeckol-A, 6,6'-bieckol, 7-phloroeckol, etc. [55]. They tested the massive inhibitory property of methanolic extracts of *Ecklonia cava* and *E. stolonifera* over  $\alpha$ -glucosidase activity, using acarbose as positive control. They have shown that crude extracts of seaweed-derived phlorotannins including dieckol, diphlorethohydroxycarmalol effectively reduce the post-prandial blood sugar level in diabetes-induced mice. Consistently, Abdelsalam et al. advocated the better anti-hyperglycemic efficacy of dieckol (IC<sub>50</sub> value of 1.61  $\mu$ M) and phlorofucofuroeckol-A (IC<sub>50</sub> value of 1.37  $\mu$ M) in comparison to standard drug acarbose (IC<sub>50</sub> value of 51.65  $\mu$ M) [56]. They have also demonstrated the anti-diabetic property of eckol (IC<sub>50</sub>: 11.16  $\mu$ M) extracted from *Ecklonia maxima*. They have performed a comparative analysis with the metabolites of *Eisenia bicyclis* (Arame), and reported fucofuroeckol A (IC<sub>50</sub> value of 42.91  $\mu$ M) to be better  $\alpha$ -amylase inhibitor than dioxinodehydroeckol (IC<sub>50</sub> value of 472.70  $\mu$ M). Moon et al. elucidated  $\alpha$ -amylase inhibitory property of polyphenols like dieckol, eckol, and 7-phloroeckol from *Eisenia bicyclis* [57]. Gotama et al. studied that phlorotannins from *Sargassum hystrix* effectively reduces preprandial (186.4 mg/mL) and post-prandial (186.9 mg/mL) blood glucose levels of streptozotocin-induced diabetic mice at a dose of 300 mg/kg without any significant effect over body-weight, compared to the standard drug glibenclamide, which at a dose of 5 mg/kg keeps the pre-prandial blood glucose level at 195.6 mg/mL and postprandial glucose level at 104.8 mg/mL [58]. Consistent with that, Senthilkumar et al. have shown that aqueous extract of *Padina boergesenii* alleviates the action of gluconeogenic enzymes better than glibenclamide in hyperglycemic rats [59]. Recently, Gunathilaka et al. have suggested the  $\alpha$ -amylase and  $\alpha$ -glucosidase inhibitory role of the polyphenol-rich extracts of *Chnoospora minima* [60].

### 5.2 Aldose reductase

The enzyme aldose reductase catalyses sorbitol synthesis from glucose using NADPH cofactor via polyol pathway. Intracellular sorbitol extreme may serve as a potential biomarker for Type 2 DM and causes diabetic neuropathy. On that account, inhibitors of aldose reductase are of immense therapeutic interest [61].

Jung et al. examined the rat lens aldose reductase inhibitory activity of the dichloromethane fraction of *Saccharina japonica*, which has been achieved probably due to the presence of porphyrin compounds like pheophytin-A and pheophorbide-A [62]. The carboxyl group (not linked with phytyl group) at the C-172 position of the porphyrin ring is responsible for this inhibitory property of pheophorbide-A. Lee et al. worked with the ethyl acetate fraction of *Eisenia bicyclis* over human recombinant aldose reductase and the result revealed better inhibition potency in comparison with reference drug epalrestat [63].

### 5.3 Dipeptidyl peptidase-4

This enzyme helps in lowering the incretin levels, like glucagon-like peptide-1 (GLP-1), a gut hormone which stimulates insulin release to control hyperglycemic blood sugar level among the patients suffering Type 2 DM. Interestingly, the culmination of GLP-1 over insulin secretion successively deteriorates when blood glucose level reaches up to euglycemic level. Hence, inhibition of dipeptidyl peptidase-4 may significantly enhance GLP-1 level, promoting insulin secretion sustaining glucose homeostasis [64].

Maneesh et al. advocated the DPP-4 inhibitory activity of ethyl acetate: methanol fraction of *Sargassum wightii*



due to richness in phenolic content [65]. Unnikrishnan et al. evaluated the DPP-4 enzyme inhibitory property of the methanolic extract of *Turbinaria ornata* with 55.4% efficiency at a concentration of 80 µg/mL in comparison with reference drug diprotin A (65%) [66].

#### 5.4 Protein tyrosine phosphatase 1B (PTP 1B)

PTP 1B is a negative regulator of the insulin signalling cascade, present on the cytosolic face of the membrane of endoplasmic reticulum [56]. The insulin receptor is a classic example of receptor tyrosine kinase family proteins, which when binds to insulin, autophosphorylates itself in its specific tyrosine residues triggering several downstream signalling reactions. But PTP 1B, through dephosphorylation renders the insulin receptor inactive. Therefore, inhibition of PTP 1B may remove this hindrance over insulin signalling pathway [67].

Ali et al. evaluated the PTP 1B inhibitory activity of the hexane fraction (IC<sub>50</sub> value of 1.83 µg/mL) of *Sargassum serratifolium* [68] in comparison with positive control ursolic acid (IC<sub>50</sub> value of 1.12 µg/mL). Later, from the hexane fraction, they isolated three different quinones; sargachromenol, sargahydroquinonic acid and sargaquinonic acid. Of these three, sargahydroquinonic acid possesses the highest PTP1B inhibitory activity (IC<sub>50</sub> value of 5.14 µg/mL) in the treatment of Type 2 DM. Feng et al. worked with another brown seaweed *Dictyopteris undulata*, and isolated 12 different stigmastane-type steroids; of which, (24S)-7b-methoxy-stigmasta-5,28-diene-3b,24-diol and (24S)-7a-methoxy-stigmasta-5,28-diene-3b,24-diol exhibit anti-hyperglycemic activity [69].

#### 5.5 Angiotensin-converting enzyme

This enzyme catalyses the synthesis of angiotensin II into angiotensin I and is an integral part of the renin-angiotensin-aldosterone system. The former one stimulates aldosterone release from adrenal cortex, intensifying water and sodium absorption which is consistent with elevating blood pressure level, leading to several microvascular and macrovascular problems, common among Type 2 DM patients. So, inhibition of this enzyme may help to keep the blood pressure under control among hyperglycemic sufferers [70].

Thomas and Kim worked with *Ecklonia stolonifera* [71]. The results revealed the phlorotannin-rich fraction containing eckol ( $70.82 \pm 0.25$  µM), dieckol ( $34.25 \pm 3.56$  µM), and phlorofucofuroeckol-A ( $12.74 \pm 0.15$  µM) exerts inhibitory activity over angiotensin-converting enzyme. Among which, dieckol inhibits noncompetitively. Therefore, it can be a potential candidate to mitigate diabetes-associated blood pressure deviation. Paiva et al. have reported the better efficiency of the protein hydrolysate fraction (IC<sub>50</sub> value of 0.5 mg/mL) of *Fucus spiralis* to inhibit angiotensin-converting enzyme, in comparison with reference drug captopril (IC<sub>50</sub> value of 0.163 mg/mL) [72]. Similarly, phloroglucinol (IC<sub>50</sub> value of 56.96 µg/mL) containing ethyl acetate fraction of *Sargassum wightii* has greater efficacy to inhibit angiotensin-converting enzyme, in comparison with the positive control captopril (IC<sub>50</sub> value of 51.79 µg/mL) [73].

#### 5.6 Suppression of advanced glycation

Advanced glycation is a complex process, the end product of which leads to several vascular disorders associated with diabetic complications in addition to renal failure and other chronic symptoms. Thus, inhibition of the formation and cumulation of advanced glycation end products may diminish the diabetic problems to some extent [74].

Shakambari et al. have evaluated the phlorotannin-mediated inhibition of advanced glycation end product formation in glucose-induced diabetic *Caenorhabditis elegans* [75]. They conducted their study with three different taxa, and the results revealed *Padina pavonica* (IC<sub>50</sub> value of  $15.16 \pm 0.26$  µg/mL) has better inhibitory property than the other two strains; *Turbinaria ornata* (IC<sub>50</sub> value of  $22.7 \pm 0.3$  µg/mL) and *Sargassum polycystum* (IC<sub>50</sub> value of  $35.245 \pm 2.3$  µg/mL) in comparison with positive control thiamine (IC<sub>50</sub> value of 263 µg/mL). Sugiura et al. have studied the antiglycation activities of phlorotannins-rich extracts of *Ecklonia cava*, which have inhibitory action over fluorescence stained advanced glycation end products formation [76]. In addition, some recent works with seaweeds for the prospect of anti-diabetic drug development, are stipulated in Table 2.



**Table 2.** Recent works with seaweeds for the prospect of anti-diabetic drug development

Seaweed	Active principles	Mode of action	Extraction solvents	References.
<i>Enteromorpha prolifera</i>	Flavonoids	Reduces blood glucose level by upregulating IRS1/PI3K/AKT pathway and suppressing JNK1/2 pathway in liver	95% ethanol	[12]
<i>Turbinaria decurrens</i>	Cyclotrisiloxane, hexamethyl	Antioxidant activity. $\alpha$ -amylase (96.1%) and $\alpha$ -glucosidase (97.4%) inhibitory property.	Acetone	[13]
<i>Sargassum duplicatum</i> <i>Turbinaria decurrens</i>	Laminaran, fucoidan	$\alpha$ -glucosidase inhibitory property.	85% ethanol (ethanol and seaweed at a ratio of 1 : 4)	[14]
<i>Ulva fasciata</i>	-	In vitro $\alpha$ -amylase inhibitory property.	Ethyl acetate	[15]
<i>Laurencia dendroidea</i>	-	$\alpha$ -glucosidase inhibitory property. DPPH radical scavenging properties comparable with a commercial antidiabetic drug (gliclazide).	80% aqueous methanol	[17]
<i>Undaria pinnatifida</i>	Fucoxanthin	Alleviation of visceral fat mass, hepatic glucose production and hyperinsulinemia. Amelioration of hepatic glucose storage and fatty acid oxidation.	Ethanol	[77]
<i>Ulva rigida</i>	Polyphenols	Alleviation of post-prandial blood sugar level. Antioxidant activity.	Ethanol	[78]
<i>Polyopes lancifolia</i>	Bis (2,3 dibromo-4,5 dihydroxybenzy-1) ether	Reduces blood-glucose uptake. $\alpha$ -glucosidase inhibitory property.	Methanol-water (8 : 2, v/v, 1 L)	[79]
<i>Ishige okamurae</i>	Diphlorethohydroxycarmalol	$\alpha$ -glucosidase and $\alpha$ -amylase inhibition.	80% methanol	[80]
<i>Sargassum horneri</i>	Fucoidan	Maintains the blood-glucose level in an insulin dose-dependent manner.	70% ethanol	[81]
<i>Alaria esculenta</i>	-	DPP-4 inhibitory property (91.3 $\pm$ 0.1%)	Ethanol	[82]
<i>Ulva rigida</i>	-	Upregulates GLP-1 secretion and GLP-1 synthesis	Ethanol	[82]
<i>Codium fragile</i>	-	$\alpha$ -glucosidase inhibitory property. Promotes phosphorylation of AMP-activated protein kinase (AMPK). Ameliorates glucose utilization in myotubes.	Water	[83]
<i>Undaria pinnatifida</i>	Sulfated polysaccharides	Stimulates the glucose absorption in insulin-insensitive HepG2 cells. Reduces fasting blood glucose levels, relieve insulin resistance, Upregulates hepatic glycogen synthesis in HFD/STZ-induced hyperglycemic mice.	95% ethanol	[84]
<i>Cystoseira compressa</i>	Phlorotannins	Reduces serum glucose, liver malondialdehyde level and inhibit $\alpha$ -amylase, glucosidase enzymes alongside.	-	[85]
<i>Ecklonia cava</i>	Dieckol	Activation of Akt and AMPK signalling pathways.	80% aqueous ethanol	[86]
<i>Ecklonia maxima</i>	Fucoidan	Mixed type inhibitor of $\alpha$ -glucosidase.	Distilled water	[87]
<i>Bryothamnion seaforthii</i>	Lectin	Exerts hypoglycemic and hypolipidemic effects. Reduces insulin insensitivity, Stimulates the action of pancreatic $\beta$ -cell toward oxidative stress.	-	[88]

## 6. Epilogue

In this article, we have tried to account for the mountainous health benefits of seaweeds, emphasizing their ability for diabetes management. In addition, the precise pathophysiology of diabetes mellitus and the targets of therapeutic interest have been taken into consideration. Different bioactive compounds from seaweeds with anti-hyperglycemic effect and novel technologies for their extraction procedure have also been discussed. These green extraction techniques have the potential for their industrial implementation. But protocol optimization is the major task for different samples to get better yield with desired chemical composition in an affordable way. These bioactive principles from macroalgal origin and their mechanism of action are quite similar to other known anti-hyperglycemic drugs. Their propensity to hamper the working scheme of several carbohydrate-hydrolytic enzymes like  $\alpha$ -amylase and  $\alpha$ -glucosidase provides quality control to the rate of sugar digestion in quite a similar fashion to reference drug acarbose; while the amelioration of insulin perception and incretin hormones stimulation are related to metformin and other DPP-4 inhibitors respectively. Moreover, bioactive compounds from seaweed may also exert their potentiality by enhancing cellular glucose consumption, impeding the activity of enzymes like aldose reductase, DPP-4 and PTP1B, retarding AGE formation,  $\beta$ -cell cytoprotection, anti-obesity action and the associated inflammatory problems as well. Hence, seaweeds and seaweed-derived bioactive principles possess stupendous prospective to be used in Type 2 DM management either as a part of dietary intake or as purified therapeutic supplements.

## Acknowledgment

The authors are thankful to the Department of Botany, University of Calcutta and Bangabasi Evening College for working facilities. The authors are also grateful to Mousumi Panda for English editing of this manuscript.

## References

- [1] Kadam SU, Prabhasankar P. Marine foods as functional ingredients in bakery and pasta products. *Food Research International*. 2010; 43(8): 1975-1980.
- [2] Yang YJ, Nam SJ, Kong G, Kim MK. A case-control study on seaweed consumption and the risk of breast cancer. *British Journal of Nutrition*. 2010; 103(9): 1345-1353.
- [3] Iso H, Date C, Noda H, Yoshimura T, Tamakoshi A. Frequency of food intake and estimated nutrient intake among men and women: the JACC Study. *Journal of Epidemiology*. 2005; 15(Suppl. 1): S24-S42.
- [4] Iso H. Lifestyle and cardiovascular disease in Japan. *Journal of Atherosclerosis and Thrombosis*. 2011; 18(2): 83-88.
- [5] Honkanen P. Consumer acceptance of (marine) functional food. *Marine Functional Food*. 2009; 1(1): 141-154.
- [6] Kim J, Shin A, Lee JS, Youn S, Yoo KY. Dietary factors and breast cancer in Korea: an ecological study. *The Breast Journal*. 2009; 15(6): 683-686.
- [7] Sharifuddin Y, Chin YX, Lim PE, Phang SM. Potential bioactive compounds from seaweed for diabetes management. *Marine Drugs*. 2015; 13(8): 5447-5491.
- [8] Tanemura Y, Yamanaka-Okumura H, Sakuma M, Nii Y, Taketani Y, Takeda E. Effects of the intake of *Undaria pinnatifida* (Wakame) and its sporophylls (Mekabu) on postprandial glucose and insulin metabolism. *The Journal of Medical Investigation*. 2014; 61(3-4): 291-297.
- [9] Paradis ME, Couture P, Lamarche B. A randomised crossover placebo-controlled trial investigating the effect of brown seaweed (*Ascophyllum nodosum* and *Fucus vesiculosus*) on postchallenge plasma glucose and insulin levels in men and women. *Applied Physiology, Nutrition, and Metabolism*. 2011; 36(6): 913-919.
- [10] Lee HY, Won JC, Kang YJ, Yoon SH, Choi EO, Bae JY et al. Type 2 diabetes in urban and rural districts in Korea: factors associated with prevalence difference. *Journal of Korean Medical Science*. 2010; 25(12): 1777-1783.
- [11] Sanger G, Rarung LK, Damongilala LJ, Kaseger BE, Montolalu LADY. Phytochemical constituents and antidiabetic activity of edible marine red seaweed (*Halymenia durvillae*). In IOP Conference Series: Earth and Environmental Science, IOP Publishing. 2019; 278(1): p. 012069.

- [12] Yan X, Yang C, Lin G, Chen Y, Miao S, Liu B, Zhao C. Antidiabetic potential of green seaweed *Enteromorpha prolifera* flavonoids regulating insulin signaling pathway and gut microbiota in type 2 diabetic mice. *Journal of Food Science*. 2019; 84(1): 165-173.
- [13] Ismail GA, Gheda SF, Abo-shady AM, Abdel-Karim OH. In vitro potential activity of some seaweeds as antioxidants and inhibitors of diabetic enzymes. *Food Science and Technology*. 2020; 40(3): 681-691.
- [14] Hardoko ST, Yogabuana M, Olivia S. An in vitro study of antidiabetic activity of *Sargassum duplicatum* and *Turbinaria decurrens* seaweed. *International Journal of Pharmaceutical Science Invention*. 2014; 3(2): 13-18.
- [15] Mohapatra L, Bhattamisra SK, Panigrahy RC, Parida SK. Evaluation of the antioxidant, hypoglycemic and anti-diabetic activities of some seaweed collected from the East Coast of India. *Biomedical and Pharmacology Journal*. 2016; 9(1): 365-375.
- [16] Radhika D, Priya R. Assessment of anti-diabetic activity of some selected seaweeds. *European Journal of Biomedical and Pharmaceutical Sciences*. 2015; 2(6): 151-154.
- [17] Nguyen TH, Nguyen TLP, Tran TVA, Do AD, Kim SM. Antidiabetic and antioxidant activities of red seaweed *Laurencia dendroidea*. *Asian Pacific Journal of Tropical Biomedicine*. 2019; 9(12): 501.
- [18] Pirian K, Moein S, Sohrabipour J, Rabiei R, Blomster J. Antidiabetic and antioxidant activities of brown and red macroalgae from the Persian Gulf. *Journal of Applied Phycology*. 2017; 29(6): 3151-3159.
- [19] Bhattacharjee R, Mitra A, Dey B, Pal A. Exploration of anti-diabetic potentials amongst marine species-a mini review. *Indo Global Journal of Pharmaceutical Sciences*. 2014; 4(2): 65-73.
- [20] Akpaso MI, Igiri AO, Odey PA. A Comparative study on the effect of combined methanolic leaf extracts of *Vernonia amygdalina* and *Gongronema latifolium* and metformin on the pancreatic beta cells of streptozocin induced diabetic Wistar rats. *Asian Journal of Pharmacy, Nursing and Medical Sciences*. 2017; 5(2): 42-48.
- [21] Zaccardi F, Webb DR, Yates T, Davies MJ. Pathophysiology of type 1 and type 2 diabetes mellitus: a 90-year perspective. *Postgraduate Medical Journal*. 2016; 92(1084): 63-69.
- [22] Wang Z, Wang J, Chan P. Treating type 2 diabetes mellitus with traditional Chinese and Indian medicinal herbs. *Evidence-Based Complementary and Alternative Medicine*. 2013; 343594.
- [23] Unnikrishnan PS, Suthindhiran K, Jayasri MA. Inhibitory potential of *Turbinaria ornata* against key metabolic enzymes linked to diabetes. *BioMed Research International*. 2014; 783895.
- [24] Hamed SM, Abd El-Rhman AA, Abdel-Raouf N, Ibraheem IB. Role of marine macroalgae in plant protection & improvement for sustainable agriculture technology. *Beni-Suef University Journal of Basic and Applied Sciences*. 2018; 7(1): 104-110.
- [25] Cikoš AM, Jokić S, Šubarić D, Jerković I. Overview on the application of modern methods for the extraction of bioactive compounds from marine macroalgae. *Marine Drugs*. 2018; 16(10): 348.
- [26] Dimopoulos N, Watson M, Sakamoto K, Hundal HS. Differential effects of palmitate and palmitoleate on insulin action and glucose utilization in rat L6 skeletal muscle cells. *Biochemical Journal*. 2006; 399(3): 473-481.
- [27] Sabin MA, Moon JH, Lee JY, Kang SB, Park JS, Lee BW et al. Dietary monounsaturated fatty acids preserve the insulin signaling pathway via IRS-1/PI3K in rat skeletal muscle. *Lipids*. 2010; 45: 1109-1116.
- [28] Thomsen C, Storm H, Holst JJ, Hermansen K. Differential effects of saturated and monounsaturated fats on postprandial lipemia and glucagon-like peptide 1 responses in patients with type 2 diabetes. *The American Journal of Clinical Nutrition*. 2003; 77(3): 605-611.
- [29] Esposito K, Maiorino MI, Ciotola M, Di Palo C, Scognamiglio P, Gicchino M, Giugliano D. Effects of a Mediterranean-style diet on the need for antihyperglycemic drug therapy in patients with newly diagnosed type 2 diabetes: a randomized trial. *Annals of Internal Medicine*. 2009; 151(5): 306-314.
- [30] Sánchez-Machado DI, López-Cervantes J, Lopez-Hernandez J, Paseiro-Losada P. Fatty acids, total lipid, protein and ash contents of processed edible seaweeds. *Food Chemistry*. 2004; 85(3): 439-444.
- [31] Kumari P, Kumar M, Gupta V, Reddy CRK, Jha B. Tropical marine macroalgae as potential sources of nutritionally important PUFAs. *Food Chemistry*. 2010; 120(3): 749-757.
- [32] Lovejoy JC. The influence of dietary fat on insulin resistance. *Current Diabetes Reports*. 2002; 2(5): 435-440.
- [33] Lee JY, Zhao L, Youn HS, Weatherill AR, Tapping R, Feng L et al. Saturated fatty acid activates but polyunsaturated fatty acid inhibits Toll-like receptor 2 dimerized with Toll-like receptor 6 or 1. *Journal of Biological Chemistry*. 2004; 279(17): 16971-16979.
- [34] Ferrucci L, Cherubini A, Bandinelli S, Bartali B, Corsi A, Lauretani F, Guralnik JM. Relationship of plasma polyunsaturated fatty acids to circulating inflammatory markers. *The Journal of Clinical Endocrinology & Metabolism*. 2006; 91(2): 439-446.

- [35] Jump DB, Botolin D, Wang Y, Xu J, Christian B, Demeure O. Fatty acid regulation of hepatic gene transcription. *The Journal of Nutrition*. 2005; 135(11): 2503-2506.
- [36] Weickert MO, Pfeiffer AF. Metabolic effects of dietary fibre consumption and prevention of diabetes. *The Journal of Nutrition*. 2008; 138(3): 439-442.
- [37] Dumelod BD, Ramirez RP, Tiangson CL, Barrios EB, Panlasigui LN. Carbohydrate availability of arroz caldo with lambda-carrageenan. *International Journal of Food Sciences and Nutrition*. 1999; 50(4): 283-289.
- [38] Goñi I, Valdivieso L, Garcia-Alonso A. Nori seaweed consumption modifies glycemic response in healthy volunteers. *Nutrition Research*. 2000; 20(10): 1367-1375.
- [39] Vaugelade P, Hoebler C, Bernard F, Guillon F, Lahaye M, Duee PH, Darcy-Vrillon B. Non-starch polysaccharides extracted from seaweed can modulate intestinal absorption of glucose and insulin response in the pig. *Reproduction Nutrition Development*. 2000; 40(1): 33-47.
- [40] Oh SH, Ahn J, Kang DH, Lee HY. The effect of ultrasonicated extracts of *Spirulina maxima* on the anticancer activity. *Marine Biotechnology*. 2011; 13(2): 205-214.
- [41] Duarte K, Justino CIL, Gomes AM, Rocha-Santos T, Duarte AC. Green analytical methodologies for preparation of extracts and analysis of bioactive compounds. *Comprehensive Analytical Chemistry*. 2014; 65: 59-78.
- [42] Kadam SU, Tiwari BK, O'Donnell CP. Application of novel extraction technologies for bioactives from marine algae. *Journal of Agricultural and Food Chemistry*. 2013; 61(20): 4667-4675.
- [43] Dang TT, Van Vuong Q, Schreider MJ, Bowyer MC, Van Altena IA, Scarlett CJ. Optimisation of ultrasound-assisted extraction conditions for phenolic content and antioxidant activities of the alga *Hormosira banksii* using response surface methodology. *Journal of Applied Phycology*. 2017; 29(6): 3161-3173.
- [44] Topuz OK, Gokoglu N, Yerlikaya P, Ucak I, Gumus B. Optimization of antioxidant activity and phenolic compound extraction conditions from red seaweed (*Laurencia obtusa*). *Journal of Aquatic Food Product Technology*. 2016; 25(3): 414-422.
- [45] Mittal R, Tavanandi HA, Mantri VA, Raghavarao KSMS. Ultrasound assisted methods for enhanced extraction of phycobiliproteins from marine macro-algae, *Gelidium pusillum* (Rhodophyta). *Ultrasonics Sonochemistry*. 2017; 38: 92-103.
- [46] Rodriguez-Jasso RM, Mussatto SI, Pastrana L, Aguilar CN, Teixeira JA. Microwave-assisted extraction of sulfated polysaccharides (fucoidan) from brown seaweed. *Carbohydrate Polymers*. 2011; 86(3): 1137-1144.
- [47] Balasubramanian S, Allen JD, Kanitkar A, Boldor D. Oil extraction from *Scenedesmus obliquus* using a continuous microwave system-design, optimization, and quality characterization. *Bioresource Technology*. 2011; 102(3): 3396-3403.
- [48] Magnusson M, Yuen AK, Zhang R, Wright JT, Taylor RB, Maschmeyer T, de Nys R. A comparative assessment of microwave assisted (MAE) and conventional solid-liquid (SLE) techniques for the extraction of phloroglucinol from brown seaweed. *Algal Research*. 2017; 23: 28-36.
- [49] del Pilar Sánchez-Camargo A, Ibáñez E, Cifuentes A, Herrero M. Bioactives obtained from plants, seaweeds, microalgae and food by-products using pressurized liquid extraction and supercritical fluid extraction. *Green Extraction Techniques: Principles, Advances and Applications*. 2017; 76: 27.
- [50] Plaza M, Amigo-Benavent M, Del Castillo MD, Ibáñez E, Herrero M. Facts about the formation of new antioxidants in natural samples after subcritical water extraction. *Food Research International*. 2010; 43(10): 2341-2348.
- [51] Satpati GG, Pal R. Microalgae- biomass to biodiesel: a review. *Journal of algal Biomass Utilization*. 2018; 9(4): 11-37.
- [52] Al Khawli F, Pateiro M, Domínguez R, Lorenzo JM, Gullón P, Kousoulaki K, Ferrer E, Berrada H, Barba FJ. Innovative green technologies of intensification for valorization of seafood and their by-products. *Marine Drugs*. 2019; 17(12): 689.
- [53] Ivanović M, Islamčević Razboršek M, Kolar M. Innovative extraction techniques using deep eutectic solvents and analytical methods for the isolation and characterization of natural bioactive compounds from plant material. *Plants*. 2020; 9(11): 1428.
- [54] Nair SS, Kavrekar V, Mishra A. In vitro studies on alpha amylase and alpha glucosidase inhibitory activities of selected plant extracts. *European Journal of Experimental Biology*. 2013; 3(1): 128-132.
- [55] Lee SH, Jeon YJ. Anti-diabetic effects of brown algae derived phlorotannins, marine polyphenols through diverse mechanisms. *Fitoterapia*. 2013; 86: 129-136.
- [56] Abdelsalam SS, Korashy HM, Zeidan A, Agouni A. The role of protein tyrosine phosphatase (PTP)-1B in cardiovascular disease and its interplay with insulin resistance. *Biomolecules*. 2019; 9(7): 286.

- [57] Moon HE, Islam MN, Ahn BR, Chowdhury SS, Sohn HS, Jung HA, Choi JS. Protein tyrosine phosphatase 1B and  $\alpha$ -glucosidase inhibitory phlorotannins from edible brown algae, *Ecklonia stolonifera* and *Eisenia bicyclis*. *Bioscience, Biotechnology, and Biochemistry*. 2011; 75(8): 1472-1480.
- [58] Gotama TL, Amir Husni U. Antidiabetic activity of *Sargassum hystrix* extracts in streptozotocin-induced diabetic rats. *Preventive Nutrition and Food Science*. 2018; 23(3): 189.
- [59] Senthilkumar P, Sudha S, Prakash, S. Antidiabetic activity of aqueous extract of *Padina boergesenii* in streptozotocin-induced diabetic rats. *International Journal of Pharmacy and Pharmaceutical Sciences*. 2014; 6(5): 418-422.
- [60] Gunathilaka MDTL, Ranasinghe P, Samarakoon KW, Peiris LCD. In-vitro anti-diabetic activity of polyphenole-rich extract from marine brown algae *Chnoospora minima* (Hering 1841), 12th International Research Conference. 2019; p.185.
- [61] Tang W, Martin KA, Hwa J. Aldose reductase, oxidative stress, and diabetic mellitus. *Frontiers in Pharmacology*. 2012; 3: 87.
- [62] Jung HA, Islam MN, Lee CM, Oh SH, Lee S, Jung JH, Choi JS. Kinetics and molecular docking studies of an anti-diabetic complication inhibitor fucosterol from edible brown algae *Eisenia bicyclis* and *Ecklonia stolonifera*. *Chemico-biological Interactions*. 2013; 206(1): 55-62.
- [63] Lee JY, Kim SM, Jung WS, Song DG, Um BH, Son JK, Pan CH. Phlorofucofuroeckol-A, a potent inhibitor of aldo-keto reductase family 1 member B10, from the edible brown alga *Eisenia bicyclis*. *Journal of the Korean Society for Applied Biological Chemistry*. 2012; 55(6): 721-727.
- [64] Deacon CF. Physiology and pharmacology of DPP-4 in glucose homeostasis and the treatment of type 2 diabetes. *Frontiers in Endocrinology*. 2019; 10: 80.
- [65] Maneesh A, Chakraborty K, Makkar F. Pharmacological activities of brown seaweed *Sargassum wightii* (Family Sargassaceae) using different in vitro models. *International Journal of Food Properties*. 2017; 20(4): 931-945.
- [66] Unnikrishnan PS, Suthindhiran K, Jayasri MA. Antidiabetic potential of marine algae by inhibiting key metabolic enzymes. *Frontiers in Life Science*. 2015; 8(2): 148-159.
- [67] Bakke J, Haj FG. Protein-tyrosine phosphatase 1B substrates and metabolic regulation. *Seminars in cell & developmental biology*. 2015; 37: 58-65.
- [68] Ali M, Kim DH, Seong SH, Kim HR, Jung HA, Choi JS.  $\alpha$ -Glucosidase and protein tyrosine phosphatase 1B inhibitory activity of plastoquinones from marine brown alga *Sargassum serratifolium*. *Marine Drugs*. 2017; 15(12): 368.
- [69] Feng MT, Wang T, Liu AH, Li J, Yao LG, Wang B, Mao SC. PTP 1B inhibitory and cytotoxic C-24 epimers of  $\Delta$ 28-24-hydroxy stigmastane-type steroids from the brown alga *Dictyopteris undulata* Holmes. *Phytochemistry*. 2018; 146: 25-35.
- [70] Amann B, Tinzmann R, Angelkort B. ACE inhibitors improve diabetic nephropathy through suppression of renal MCP-1. *Diabetes Care*. 2003; 26(8): 2421-2425.
- [71] Thomas NV, Kim SK. Potential pharmacological applications of polyphenolic derivatives from marine brown algae. *Environmental Toxicology and Pharmacology*. 2011; 32(3): 325-335.
- [72] Paiva L, Lima E, Neto AI, Baptista J. Angiotensin I-converting enzyme (ACE) inhibitory activity, antioxidant properties, phenolic content and amino acid profiles of *Fucus spiralis* L. protein hydrolysate fractions. *Marine Drugs*. 2017; 15(10): 311.
- [73] Vijayan R, Chitra L, Penislusshiyam S, Palvannan T. Exploring bioactive fraction of *Sargassum wightii*: In vitro elucidation of angiotensin-I-converting enzyme inhibition and antioxidant potential. *International Journal of Food Properties*. 2018; 21(1): 674-684.
- [74] Singh VP, Bali A, Singh N, Jaggi AS. Advanced glycation end products and diabetic complications. *The Korean Journal of Physiology & Pharmacology*. 2014; 18(1): 1-14.
- [75] Shakambari G, Ashokkumar B, Varalakshmi P. Phlorotannins from Brown Algae: inhibition of advanced glycation end products formation in high glucose induced *Caenorhabditis elegans*. *Indian Journal of Experimental Biology*. 2015; 53(6): 371-379.
- [76] Sugiura S, Minami Y, Taniguchi R, Tanaka R, Miyake H, Mori T et al. Evaluation of anti-glycation activities of phlorotannins in human and bovine serum albumin-methylglyoxal models. *Natural Product Communications*. 2017; 12(11): 1793-1796.
- [77] Park HJ, Lee MK, Park YB, Shin YC, Choi MS. Beneficial effects of *Undaria pinnatifida* ethanol extract on diet-induced-insulin resistance in C57BL/6J mice. *Food and chemical toxicology: an international journal published for the British Industrial Biological Research Association*. 2011; 49(4): 727-733.

- [78] Celikler S, Tas S, Vatan O, Ziyank-Ayvalik S, Yildiz G, Bilaloglu R. Anti-hyperglycemic and antigenotoxic potential of *Ulva rigida* ethanolic extract in the experimental diabetes mellitus. *Food and chemical toxicology: an international journal published for the British Industrial Biological Research Association*. 2009; 47(8): 1837-1840.
- [79] Kim KY, Nguyen TH, Kurihara H, Kim SM. Alpha-glucosidase inhibitory activity of bromophenol purified from the red alga *Polyopes lancifolia*. *Journal of food science*. 2010; 75(5): H145-H150.
- [80] Heo SJ, Hwang JY, Choi JI, Han JS, Kim HJ, Jeon YJ. Diphlorethohydroxycarmalol isolated from *Ishige okamurae*, a brown algae, a potent  $\alpha$ -glucosidase and  $\alpha$ -amylase inhibitor, alleviates postprandial hyperglycemia in diabetic mice. *European Journal of Pharmacology*. 2009; 615(1-3): 252-256.
- [81] Murakami S, Hirazawa C, Ohya T, Yoshikawa R, Mizutani T, Ma N, Moriyama M, Ito T, Matsuzaki C. The edible brown seaweed *Sargassum horneri* (Turner) C. Agardh ameliorates high-fat diet-induced obesity, diabetes, and hepatic steatosis in mice. *Nutrients*. 2021; 13(2): 551.
- [82] Calderwood D, Rafferty E, Fitzgerald C, Stoilova V, Wylie A, Gilmore BF, Castaneda F, Israel A, Maggs CA, Green BD. Profiling the activity of edible European macroalgae towards pharmacological targets for type 2 diabetes mellitus. *Applied Phycology*. 2021; 2(1): 10-21.
- [83] Kim E, Cui J, Kang I, Zhang G, Lee Y. Potential antidiabetic effects of seaweed extracts by upregulating glucose utilization and alleviating inflammation in C2C12 Myotubes. *International Journal of Environmental Research and Public Health*. 2021; 18(3): 1367.
- [84] Zhong QW, Zhou TS, Qiu WH, Wang YK, Xu QL, Ke SZ, Wang SJ, Jin WH, Chen JW, Zhang HW, Wei B, Wang H. Characterization and hypoglycemic effects of sulfated polysaccharides derived from brown seaweed *Undaria pinnatifida*. *Food Chemistry*. 2021; 341(1): 128148.
- [85] Gheda S, Naby MA, Mohamed T, Pereira L, Khamis A. Antidiabetic and antioxidant activity of phlorotannins extracted from the brown seaweed *Cystoseira compressa* in streptozotocin-induced diabetic rats. *Environmental Science and Pollution Research International*. 2021; 28(18): 22886-22901.
- [86] Kang MC, Wijesinghe WA, Lee SH, Kang SM, Ko SC, Yang X, Kang N, Jeon BT, Kim J, Lee DH, Jeon YJ. Dieckol isolated from brown seaweed *Ecklonia cava* attenuates type II diabetes in db/db mouse model. *Food and chemical toxicology: an international journal published for the British Industrial Biological Research Association*. 2013; 53: 294-298.
- [87] Daub CD, Mabate B, Malgas S, Pletschke BI. Fucoidan from *Ecklonia maxima* is a powerful inhibitor of the diabetes-related enzyme,  $\alpha$ -glucosidase. *International Journal of Biological Macromolecules*. 2020; 151: 412-420.
- [88] Alves M, Barreto F, Vasconcelos MA, Nascimento Neto L, Carneiro RF, Silva L, Nagano CS, Sampaio AH, Teixeira EH. Antihyperglycemic and antioxidant activities of a lectin from the marine red algae, *Bryothamnion seaforthii*, in rats with streptozotocin-induced diabetes. *International Journal of Biological Macromolecules*. 2020; 158: 773-780.